

# ESDEC

INNOVATIVE MOUNTING SYSTEMS



**RELIABLE  
AND QUICK  
INSTALLATION ON  
PITCHED ROOFS**

**CLICKFIT**

**EVO**

CORRUGATED ROOF

[www.esdec.com](http://www.esdec.com)

# THE 4 COMPONENTS OF CLICKFIT EVO

## MOUNTING BRACKET



Supports corrugated sheets of the 177/51 type that meet the valid standards as stipulated in EN 49

OR

## HANGER BOLT



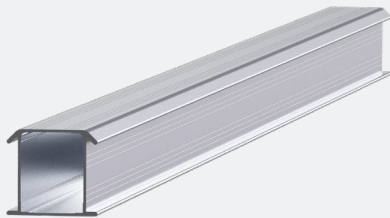
All other types of corrugated sheets

### 1.1 MOUNTING BRACKET

- One mounting bracket
- Easy to mount from above
- Stepless-adjustable height
- Even load distribution
- Self-aligning click connection: easier and quicker
- Mounting rail only placed vertically
- Integrated cable management
- For new builds and existing buildings
- Only landscape positioning of solar panels possible

### 1.2 HANGER BOLT

- Fully preassembled hanger bolt
- Replaces existing corrugated plate screw
- Height adjustable
- Compensates for roof irregularities of up to 10 degrees
- Can be rotated by 360 degrees
- Self-aligning click connection: easy and quick
- Mounting rail can be installed horizontally or vertically
- For both landscape and portrait positioning of solar panels
- For new builds and existing buildings
- Available in three lengths and two thicknesses for wood purlins/trusses



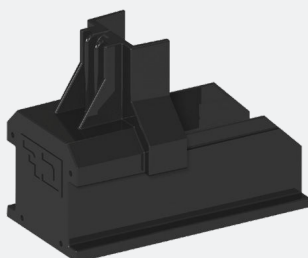
### 2. MOUNTING RAIL

- 30% stronger
- 30% lighter
- Suitable for larger roof spans



### 3. UNIVERSAL MODULE CLAMP

- Suitable for all framed solar panels
- Can be used as centre clamp or as end clamp in combination with end cap
- Standard assembly
- Including equipotential bonding for the solar panels
- Available in grey and black



### 4. END CAP

- End cap holds the module clamp in its position
- Elongated end cap to allow for aesthetically pleasing finish
- Available in grey and black



## EASY INSTALLATION ON THE ROOF

### ClickFit EVO Corrugated Roof: easy & quick

ClickFit EVO Corrugated Roof has been specially developed for use with the well-known ClickFit EVO system on corrugated roofs, as are often found in the agricultural sector. This straightforward mounting system consists of just four components and can be installed on both existing and new roofs. Thanks to its universal properties, the system is very quick and easy to mount. Simply install the mounting system on the corrugated roof using the mounting brackets or hanger bolts.

### ClickFit EVO mounting bracket

The ClickFit EVO mounting bracket is secured to the roof panel screws in the purlin, which ensures that the roof remains 100% watertight. The mounting bracket is suitable for corrugation type 177/51; it fits exactly the crest of the roof and is supported by the troughs. This ensures even force distribution and minimum pressure loads, which contributes to the overall robustness of the system.



### ClickFit EVO corrugated mounting bracket is MCS certified

Meeting MCS recognised industry standards proves the high quality, competency and compliance of ClickFit EVO mounting bracket.

### The hanger bolt compensates for roof irregularities of up to 10 degrees

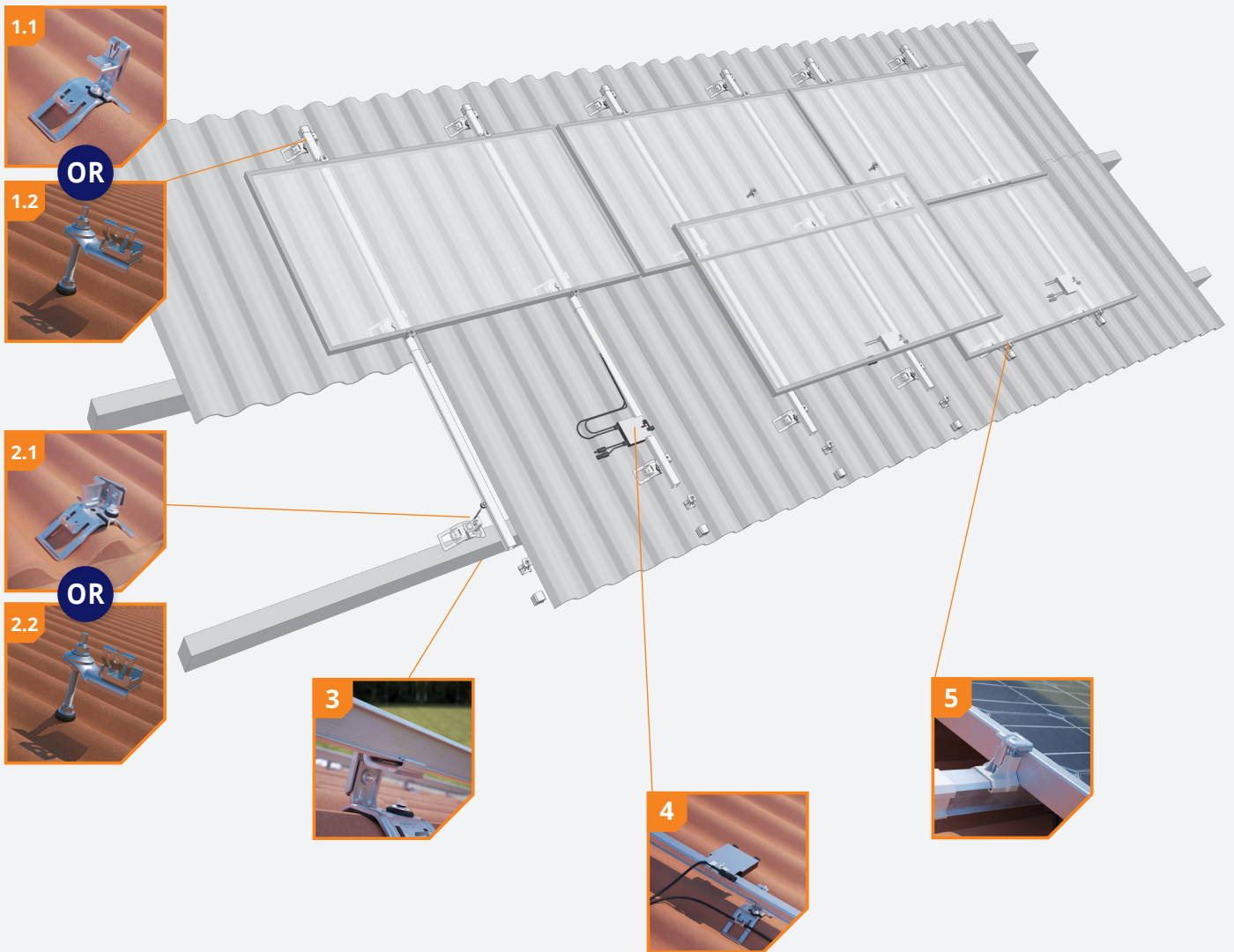
With the ClickFit EVO Hanger Bolt, you can quickly install solar panels on all types of corrugated roofs. The hanger bolt is provided pre-assembled and the flexible adapter allows you to easily and quickly compensate for roof irregularities of up to 10 degrees. Using the universal ClickFit EVO click connection fitted to the hanger bolt as standard, you can simply carry on working with familiar components from the ClickFit EVO product line, such as universal rails, module clamps and end caps. As well as being suitable for corrugated roofs, this hanger bolt can also be used on steel roofs, EPDM, bitumen and Arabic tiles.

#### ADVANTAGES FOR THE INSTALLER

- ✔ Both landscape and portrait positioning
- ✔ Four components on the roof
- ✔ Only one tool needed
- ✔ Quick and easy installation
- ✔ 20-year product warranty

#### ADVANTAGES FOR YOUR CUSTOMER

- ✔ 100% waterproof
- ✔ Roof remains intact
- ✔ Aesthetic design, also available in black
- ✔ Extensively tested product
- ✔ 20-year product warranty



**1 Mounting bracket or hanger bolt**

Both the mounting bracket and hanger bolt are delivered fully preassembled. The mounting bracket has a stepless-adjustable height. Simply use the screw thread to set the hanger bolt to the required height.

**2 Fixing with existing corrugated sheet screws**

The mounting bracket features a cut-out. This makes it easy to secure the mounting bracket to the corrugated sheet screws.

**Hanger bolt replaces corrugated sheet screws**

Wherever a hanger bolt is inserted, it replaces the existing corrugated sheet screw.

**3 Unique click connection**

Both the mounting bracket and the hanger bolt have a self-aligning click connection. This makes it easy to install the mounting rail from above.

**4 Integrated cable management**

Cables and plugs can be held in place neatly and securely at all times in both the mounting bracket and the cable clip. The optimizer can also be easily clicked onto the cable clip.

**5 Always the right size**

The universal module clamp is suitable for all framed solar panels and can be used as a middle clamp and – in combination with the end cap or end clamp support – also as an end clamp.

## ROOF CONNECTOR



ClickFit EVO Corrugated Sheet Mounting Bracket  
1008090



ClickFit EVO Hanger Bolt

M10x200mm	1008011
M10x250mm	1008012
M12x250mm	1008013
M12x300mm	1008014
M12x350mm	1008015 [DTO]

## MOUNTING RAIL



ClickFit EVO Mounting Rail

Mounting rail 1188mm	1008131
Mounting rail 2338mm	1008132
Mounting rail 3488mm	1008133
Mounting rail 3500mm	1008007
Mounting rail 4638mm	1008134
Mounting rail 5770mm	1008135

## MODULE CLAMP & END CONNECTORS



ClickFit EVO Module Clamp Universal grey  
1008020



ClickFit EVO Module Clamp Universal black  
1008020-B



ClickFit EVO Mounting Rail End Cap grey  
1008060



ClickFit EVO Mounting Rail End Cap black  
1008060-B



ClickFit EVO End Cap without end clamp support grey  
1008066



ClickFit EVO End Cap without end clamp support black  
1008066-B



ClickFit EVO End Clamp Support grey  
1008065



ClickFit EVO End Clamp Support black  
1008065-B

## MOUNTING MATERIALS



ClickFit EVO self-drilling sheet metal screw  
1003015 (required for vertical rail installation)

## ACCESSORIES



ClickFit EVO Mounting Rail Connector Piece  
1008061



ClickFit EVO Mounting Rail Cable clip optimizer ready  
1008062



ClickFit EVO Auxiliary set with cable clip  
1008064



ClickFit EVO bit torx 30  
1008069

## Calculator

In the Esdec calculator you can manage and calculate all your projects, for both pitched and flat roofs. One platform with all Esdec mounting systems for the most reliable calculation of your project.

- ✓ Save time: manage all your projects on one platform
- ✓ One calculator for projects on pitched and flat roofs
- ✓ All calculations are based on extensive testing and the latest safety standards

Unlimited calculations: use the calculator for your own project calculations without limits on the roof height. The calculator also takes into account the terrain category, snow load and wind zone to provide accurate advice, specific to your project.

Go to [eu.esdec.com/en/calculator](https://eu.esdec.com/en/calculator)



## Warranty

ClickFit EVO meets all of the requirements and standards that currently apply. ClickFit EVO comes with a unique 20-year product warranty, thus ensuring the system's quality.

- ✓ Use of premium high tech materials
- ✓ Extensively tested
- ✓ BDA/KIWA certification
- ✓ 20-year product warranty





**BUILDING VALUE<sup>+</sup> FOR  
SOLAR PROFESSIONALS**

**Esdec**

Londenstraat 16  
7418 EE Deventer  
The Netherlands

☎ +31 850 702 000

✉ [info@esdec.com](mailto:info@esdec.com)

05072022