

**CALIDA MINI**  
**ADVANCED**




**THE CALIDA MINI HAS THE MOST ADVANCED FULL SPECTRUM LED TECHNOLOGY IN THE MARKET - BE AMAZED BY THE TRUE AND NATURAL LIGHT**

## Technical data

Nominal power: 2.2 W  
 Operating voltage: 5 VDC  
 Nominal flux ( full brightness) : 190 LM  
 CRI> 97 RA -Red color R9> 95  
 Charging time: 3 Hours (5V 2A charger)  
 Service time: 10 Hours with full brightness  
 Service time: 20 Hours with 50% brightness  
 Default brightness: 100 %  
 Battery capacity: 5,000 mAh  
 Lamp shade material: Aluminum  
 Charging dock: USB type C  
 Working temperature: -20°C ~ 35°C  
 1 M type C cable included in package

Safety class: III SELV  
 IP 54  
 Safety standard: CE  
 Over charge protection: Yes  
 Over discharge protection: Yes  
 Low battery indicator light: Yes

## Operation

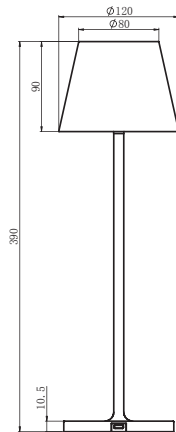
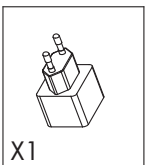
Turn on your CALIDA MINI by slightly touching the  on the top of the lamp shade.  
 Touch the  again to turn off the lamp.  
 Dimming: keeping touching the  for at least 2 seconds to dim the brightness up or down.  
 Charging: please charge your CALIDA MINI when the indicator light on the lamp base turns to red which indicates low battery capacity. The indicator light will turn to green when the battery is fully charged. The USB type C dock is water proof, however, please keep the product away from wet locations while charging to avoid damage.

## Caution

The product contains Li-ion batteries inside. Please keep it away from fire, strong vibration, exposure to direct sunshine or any improper use.

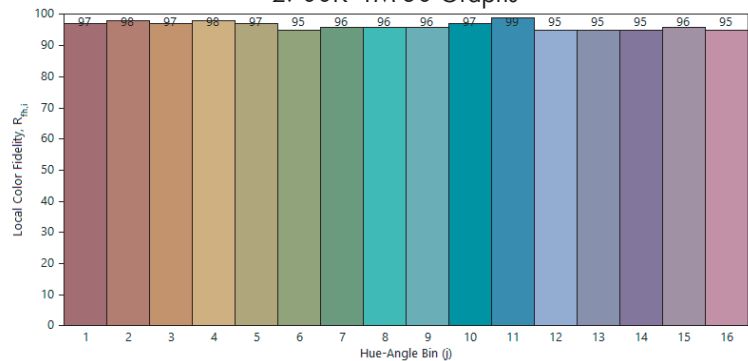
## Optional accessory

- 5V 2A power adapter (IP 20)

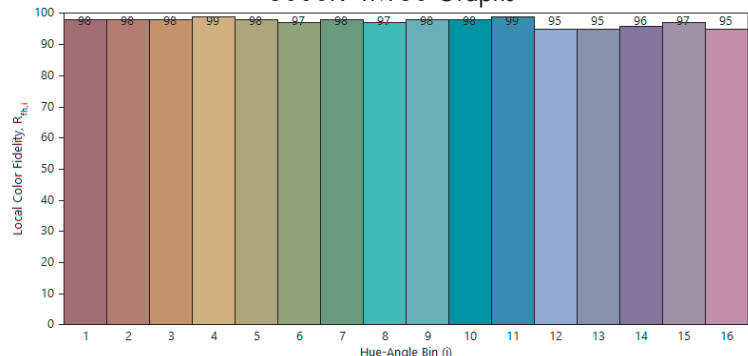


CALIDA MINI WHITE

2700K TM-30 Graphs



3000K TM-30 Graphs






**THE CALIDA MINI HAS THE MOST ADVANCED FULL SPECTRUM LED TECHNOLOGY IN THE MARKET - BE AMAZED BY THE TRUE AND NATURAL LIGHT**

## Technical data

Nominal power: 2.2 W  
 Operating voltage: 5 VDC  
 Nominal flux ( full brightness ) : 190 LM  
 CRI> 97 RA -Red color R9> 95  
 Charging time: 3 Hours  
 Service time: 10 Hours with full brightness  
 Service time: 18 Hours with 50% brightness  
 Default brightness: 100 %  
 Battery capacity: 5,000 mAh  
 Lamp shade material: Aluminum  
 Charging dock: USB type C  
 Working temperature: -20°C ~ 35°C  
 1 M type C cable included in package

Safety class: III SELV  
 IP 54  
 Safety standard: CE  
 Over charge protection: Yes  
 Over discharge protection: Yes  
 Low battery indicator light: Yes

## Operation

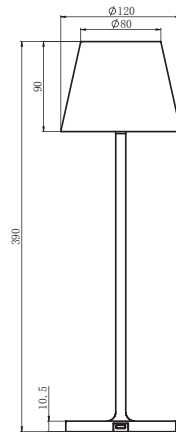
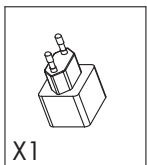
Turn on your CALIDA MINI by slightly touching the  on the top of the lamp shade.  
 Touch the  again to turn off the lamp.  
 Dimming: keeping touching the  for at least 2 seconds to dim the brightness up or down.  
 Charging: please charge your CALIDA MINI when the indicator light on the lamp base turns to red which indicates low battery capacity. The indicator light will turn to green when the battery is fully charged. The USB type C dock is water proof, however, please keep the product away from wet locations while charging to avoid damage.

## Caution

The product contains Li-ion batteries inside. Please keep it away from fire, strong vibration, exposure to direct sunshine or any improper use.

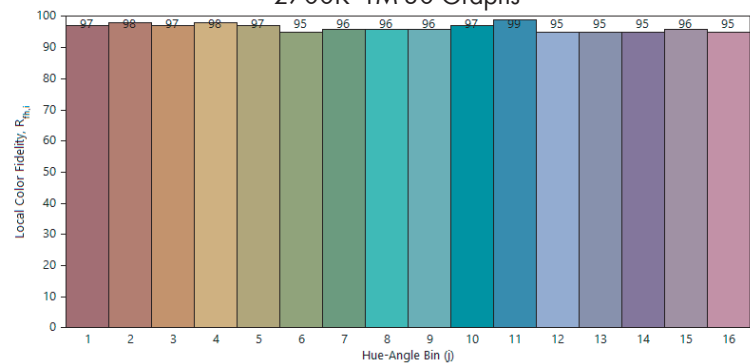
## Optional accessory

- 5V 2A power adapter (IP 20)

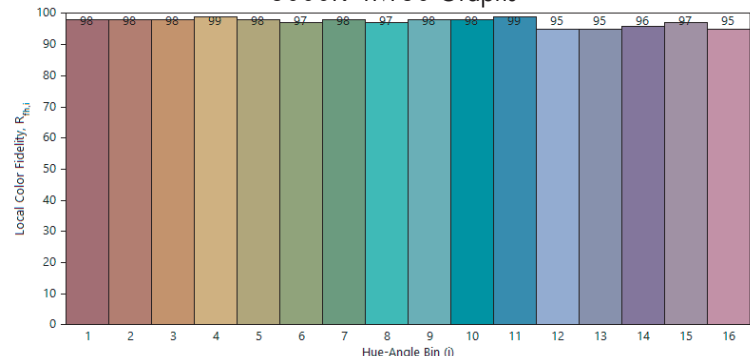


CALIDA MINI BLACK

2700K TM-30 Graphs



3000K TM-30 Graphs



**THE CALIDA MINI HAS THE MOST ADVANCED FULL SPECTRUM LED TECHNOLOGY IN THE MARKET - BE AMAZED BY THE TRUE AND NATURAL LIGHT**

### Technical data

Nominal power: 2.2 W  
 Operating voltage: 5 VDC  
 Nonimal flux ( full brightness) : 190 LM  
 CRI> 97 RA -Red color R9> 95  
 Charging time: 3 Hours  
 Service time: 10 Hours with full brightness  
 Service time: 18 Hours with 50% brightness  
 Default brightness: 100 %  
 Battery capacity: 5,000 mAh  
 Lamp shade material: Aluminum  
 Charging dock: USB type C  
 Working temperature: -20°C ~ 35°C  
 1 M type C cable included in package

Safety class: III SELV  
 IP 54  
 Safety standard: CE  
 Over charge protection: Yes  
 Over discharge protection: Yes  
 Low battery indicator light: Yes

### Operation

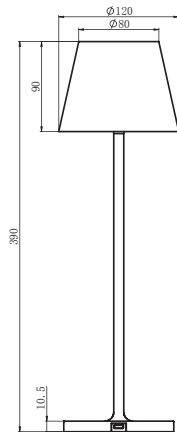
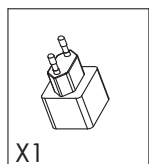
Turn on your CALIDA MINI by slightly touching the **⏻** on the top of the lamp shade.  
 Touch the **⏻** again to turn off the lamp.  
 Dimming: keeping touching the **⏻** for at least 2 seconds to dim the brightness up or down.  
 Charging: please charge your CALIDA MINI when the indicator light on the lamp base turns to red which indicates low battery capacity. The indicator light will turn to green when the battery is fully charged. The USB type C dock is water proof, however, please keep the product away from wet locations while charging to avoid damage.

### Caution

The product contains Li-on batteries inside. Please keep it away from fire, strong vibration, exposure to direct sunshine or any improper use.

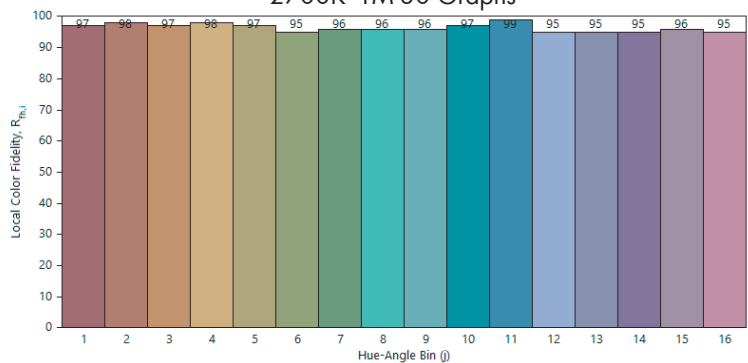
### Optional accessory

- 5V 2A power adapter (IP 20)

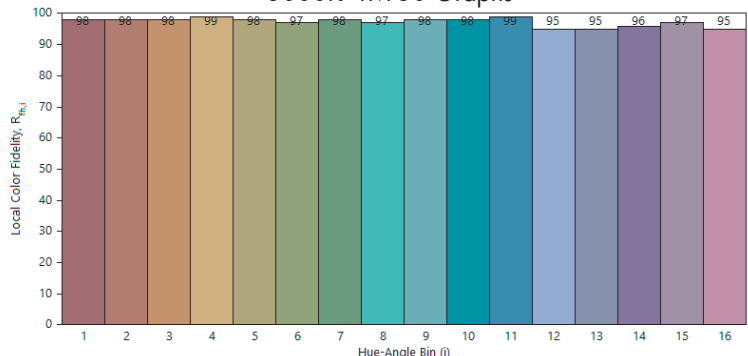


CALIDA MINI GREEN

2700K TM-30 Graphs



3000K TM-30 Graphs






**THE CALIDA MINI HAS THE MOST ADVANCED FULL SPECTRUM LED TECHNOLOGY IN THE MARKET - BE AMAZED BY THE TRUE AND NATURAL LIGHT**

## Technical data

Nominal power: 2.2 W  
 Operating voltage: 5 VDC  
 Nominal flux ( full brightness ) : 190 LM  
 CRI> 97 RA -Red color R9> 95  
 Charging time: 3 Hours  
 Service time: 10 Hours with full brightness  
 Service time: 18 Hours with 50% brightness  
 Default brightness: 100 %  
 Battery capacity: 5,000 mAh  
 Lamp shade material: Aluminum  
 Charging dock: USB type C  
 Working temperature: -20°C ~ 35°C  
 1 M type C cable included in package

Safety class: III SELV  
 IP 54  
 Safety standard: CE  
 Over charge protection: Yes  
 Over discharge protection: Yes  
 Low battery indicator light: Yes

## Operation

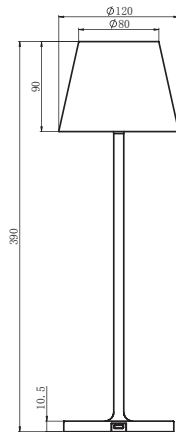
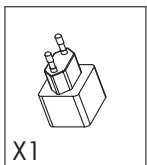
Turn on your CALIDA MINI by slightly touching the  on the top of the lamp shade.  
 Touch the  again to turn off the lamp.  
 Dimming: keeping touching the  for at least 2 seconds to dim the brightness up or down.  
 Charging: please charge your CALIDA MINI when the indicator light on the lamp base turns to red which indicates low battery capacity. The indicator light will turn to green when the battery is fully charged. The USB type C dock is water proof, however, please keep the product away from wet locations while charging to avoid damage.

## Caution

The product contains Li-ion batteries inside. Please keep it away from fire, strong vibration, exposure to direct sunshine or any improper use.

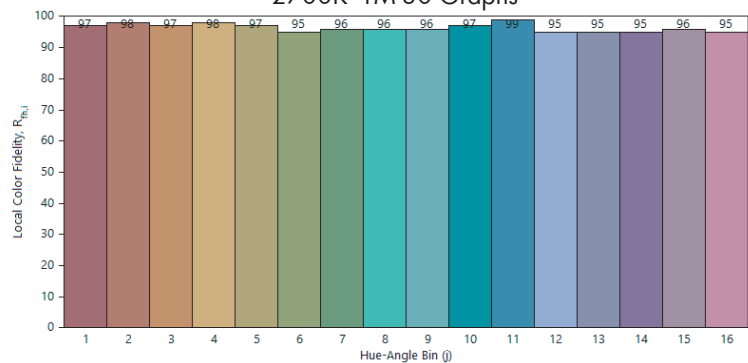
## Optional accessory

- 5V 2A power adapter (IP 20)

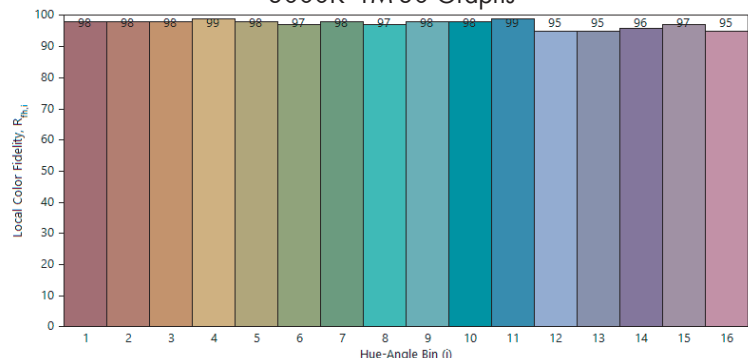


CALIDA MINI CORTEN

2700K TM-30 Graphs



3000K TM-30 Graphs






**THE CALIDA MINI HAS THE MOST ADVANCED FULL SPECTRUM LED TECHNOLOGY IN THE MARKET - BE AMAZED BY THE TRUE AND NATURAL LIGHT**

## Technical data

Nominal power: 2.2 W  
 Operating voltage: 5 VDC  
 Nominal flux ( full brightness ) : 190 LM  
 CRI> 97 RA -Red color R9> 95  
 Charging time: 3 Hours  
 Service time: 10 Hours with full brightness  
 Service time: 18 Hours with 50% brightness  
 Default brightness: 100 %  
 Battery capacity: 5,000 mAh  
 Lamp shade material: Aluminum  
 Charging dock: USB type C  
 Working temperature: -20°C ~ 35°C  
 1 M type C cable included in package

Safety class: III SELV  
 IP 54  
 Safety standard: CE  
 Over charge protection: Yes  
 Over discharge protection: Yes  
 Low battery indicator light: Yes

## Operation

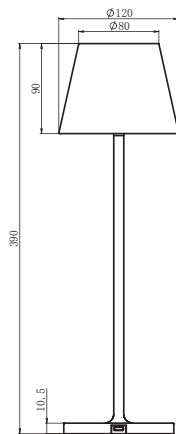
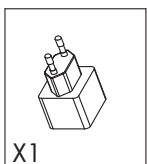
Turn on your CALIDA MINI by slightly touching the  on the top of the lamp shade.  
 Touch the  again to turn off the lamp.  
 Dimming: keeping touching the  for at least 2 seconds to dim the brightness up or down.  
 Charging: please charge your CALIDA MINI when the indicator light on the lamp base turns to red which indicates low battery capacity. The indicator light will turn to green when the battery is fully charged. The USB type C dock is water proof, however, please keep the product away from wet locations while charging to avoid damage.

## Caution

The product contains Li-ion batteries inside. Please keep it away from fire, strong vibration, exposure to direct sunshine or any improper use.

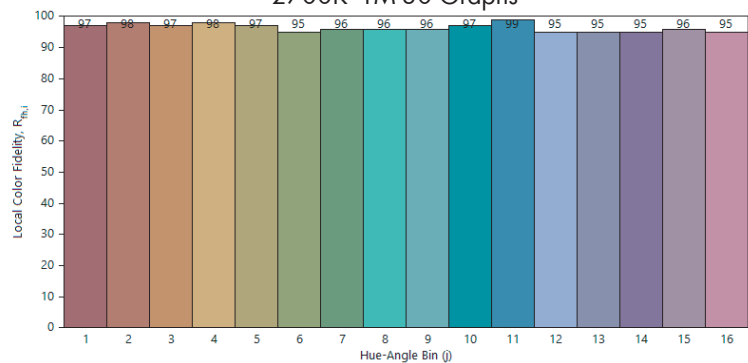
## Optional accessory

- 5V 2A power adapter (IP 20)



CALIDA MINI GODEN

2700K TM-30 Graphs



3000K TM-30 Graphs

