

# BAT-80 All-in-one Battery Energy Storage System



X O L T A

# BAT-80 All-in-one Battery Energy Storage System

## The ideal multi-purpose battery

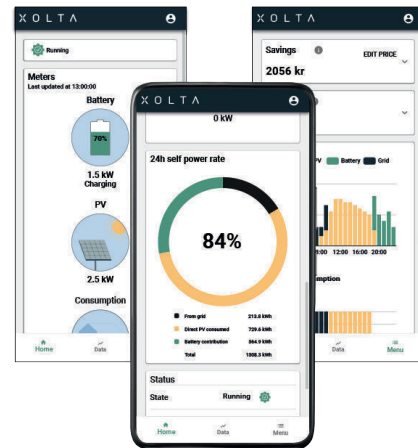
Take advantage of up-to 60kW bi-directional AC power and 80kWh nominal energy in BAT-80, our 3rd generation industrial energy storage system. The entire system is delivered fully assembled and tested. It is housed in a durable outdoor steel cabinet with a footprint of just 800x845mm.

Achieve critical time savings on-site by the enhanced lift n' drop design. Front access to all important connections, with no single item exceeding 30 kg, provides for easy service - any part can be exchanged in less than 20 min by one person.

Constant safe operation is ensured by LFP cells, the safest chemistry on the market, a state-of-the-art BMS and several fire protection layers.

Choose BAT-80 for any application, regardless whether your requirement is high power for profitable grid services or you simply wish to store excess renewable energy. Switch on the configurable Time of Use (TOU) policies and let your XOLTA energy storage system earn additional savings from variations in the price of electricity. Near real-time data are at your fingertips. A series of comprehensive easy-to-read screens takes you through your XOLTA battery current and past performance.

If needs are changing, simply add additional storage units at your convenience, even with the benefit of next generation cell technology – they aggregate seamlessly and appear as one system in the app.



### Renewable support functions

- Time-shift
- Scheduling based on weather,
- Past consumption,
- Electricity prices (TOU)



### Power quality features

- Load balancing
- Harmonic filtering
- Reactive power control and power factor correction



### Grid support Functions

- Frequency support
- Voltage support
- Peak shaving
- Energy arbitrage
- Load following



### Off-grid applications

- Back-up
- Grid forming





TECHNICAL PROPERTIES:	BAT-80/25/50	BAT-80/30/60
Power (charge/discharge)	25 kVA or 50 kVA	30 kVA or 60 kVA
Nominal battery energy (DC)	80 kWh	
Usable capacity	73 kWh	
Battery chemistry	Li-ion LFP	
Nominal battery voltage	768 V DC	
Battery voltage range	720-840 V DC	
Grid connection voltage*	3 x 400V AC	
Battery system efficiency**	96,6%	
Standby power consumption	12 W	
Ambient operating temperature	-25°C to 35°C, Forced air cooling via heat exchanger	
Cooling active - optional	Ambient operating temperature -25°C to 45°C (Cooled by air conditioner)	
Parallel coupling	Ability to couple multiple racks in parallel	
Cabinet	Coated, vandal resilient steel enclosure	
Dimensions	D800mm x W845mm x H2180mm	
Weight	950 kg per rack	
STANDARDS AND COMPLIANCE:		
Battery system:	CE: Safety, health and environment	
	UN38.3 classification for safe transportation	
	EN 61010 electrical safety	
Power Conditioning System:	2016/631 EU	IEC 62477-1
	2014/35/EU	EN 61000-6-2
	2104/30/EU	EN 61000-6-4
	EN62040-2: 2006/AC class C2	
	CSA C22.2	
	EN62109-1 and EN62109-2	
	IEC 62477-1	
	DIN V VDE V 0124-100	
Grid Code Compliance:	CE	
	TF 331	
	VDE-AR-N 4105:2018-11	
	VDE-AR-N 4110: 2018-11	
	ENA-EREC G99 Type A and Type B	
	EN 50549-1 and EN 50549-2 (with local country deviations)	
	TOR	
	UNE	
	C10/C11	
	AS4777.2	
	UL 1741	
Protection rating	IP55	
Backup	Available ultimo 2023	
Performance warranty	10 years / 70%	

\*Higher voltage levels feasible with transformer, \*\*100% DoD, 15kW round-trip efficiency (only battery) at 25°C





#### LIFT and DROP:

- Pre-mountable rack base
- Easy lifting with crane or forklift
- No electrician required during deployment

#### CLIMATE ROBUST

- Insulated Euroclass A1 double coated steel rack
- Wide ambient temperature range
- IP55

#### SAFETY

- Multiple layers of fire prevention
- Automotive standard functional safety via state-of-the-art LiBAL n-BMS

#### PERFORMANCE

- Integrated inverter with power range 25-60kW
- High roundtrip efficiency
- Low standby power consumption

#### CONNECTIVITY

- Ultra-fast Cloud API access
- Local site-controller for cloud communication, control of battery system and auxiliary units

#### SERVICE

- Front access to all electrical connections
- Fast and easy exchange of all vital system components
- All vital system components <30 kg



X O L T A

[www.xolta.com](http://www.xolta.com)

XOLTA A/S  
Hassellunden 16  
2765 Smørum, Denmark